

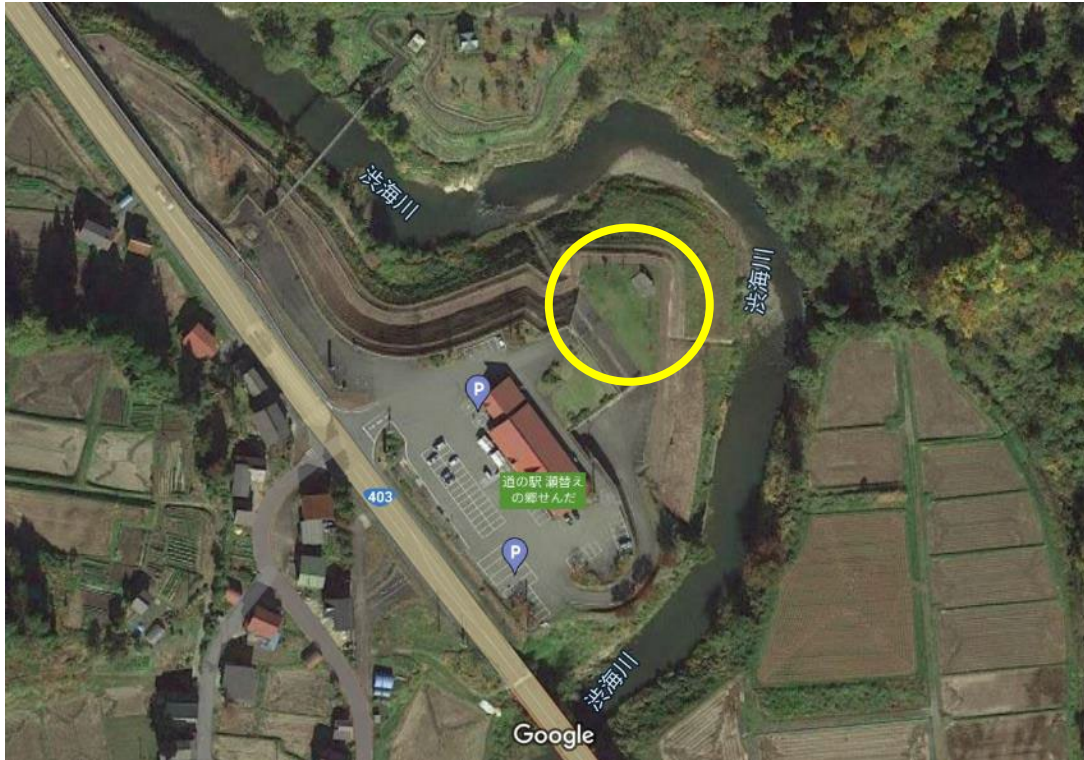
第9回 大地の芸術祭 作品展開候補地

**The 9th Echigo-Tsumari Art Triennale:
Candidate Sites for Artwork**

No.1

道の駅「瀬替えの郷せんだ」野外ステージ付近

Around the outdoor stage at the roadside station “Segae no Sato SENDA”



仙田地区は川西エリアの西部に位置し、信濃川の支流・渋海川に沿って9つの集落が点在する地域。河川の蛇行を直線化する「瀬替え」によって新田をつくり、治水に取り組んできた歴史を持つ。この道の駅は、過疎化が進行する仙田地区の交流拠点であり、当地のコミュニティ活動の中心地となっている。

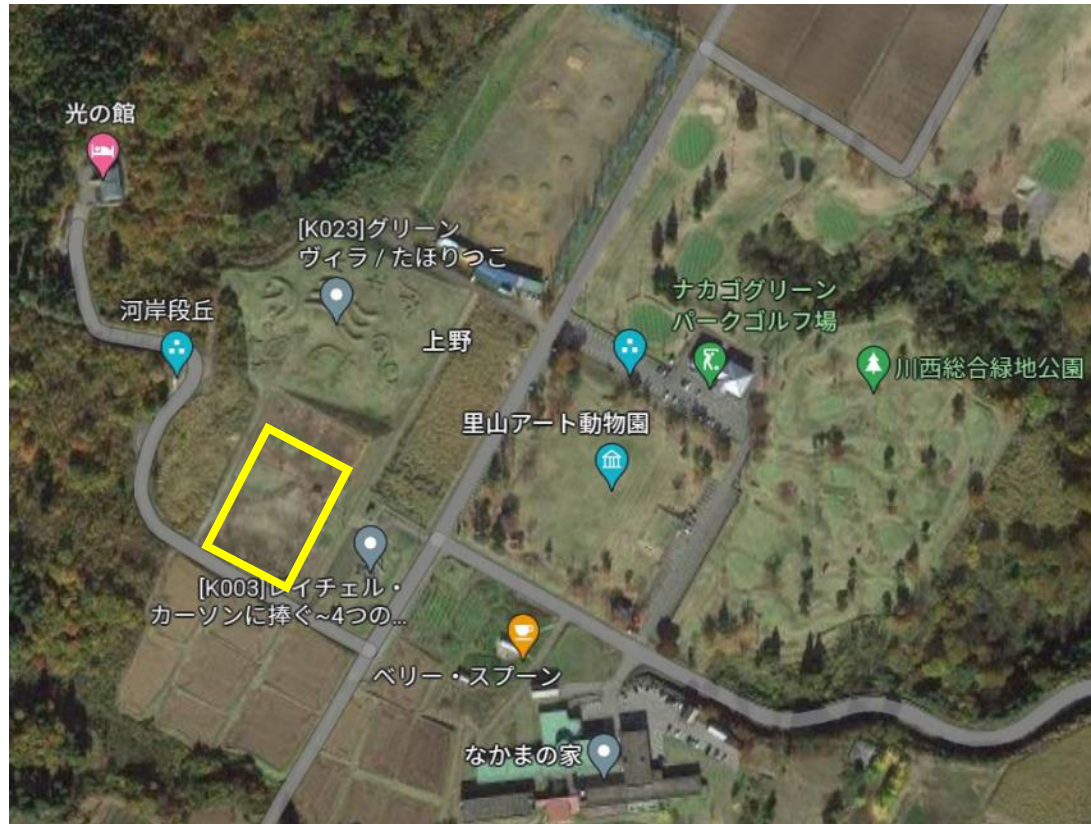
The Senda district is located in the western part of the Kawanishi area, where nine villages are scattered along the Shibumi River, a tributary of the Shinano River. The area has a history of flood control by creating new rice paddies through "Segae," a process of straightening the river's meandering course. This roadside station is a center of interaction in the depopulated Senda district and is the center of community activities in the district.



No.2

ナカゴグリーンパーク ドッグラン周辺

Near Nakago Green Park Dog Run



川西エリア・上野地区にあるナカゴグリーンパークは、広々とした芝生広場やパターゴルフ場がある公園施設。大地の芸術祭の初期から作品が集中する場所で、ジェームス・タレル「光の館」をはじめ、数多くの作品が楽しめる。候補地は野球場やドッグランとして利用してきた場所で、遠く越後三山を臨む開放的な広場になっている。

Located in the Ueno district of Kawanishi area, Nakago Green Park is a park facility with a spacious lawn and putting golf course. It has been the site of a concentration of artworks since the early days of the Echigo-Tsumari Art Triennale, and visitors can enjoy many of them, including James Turrell's "House of Light". The proposed site has been used as a baseball field and dog run, and is an open plaza with views of the three Echigo mountains in the distance.



No.3

川治地区 貯水池

Kawaji District Reservoir



川治地区は、十日町の中心市街地から近く、立ち並ぶ住宅と農地がほどよくミックスされた地域。大地の芸術祭に対して積極的な取り組みを重ねてきた地区で、山間部に比較して壮年層が多い。この貯水地はもともと農業用水の溜池だったが、今は特に利用されておらず、ただ蓮などが繁茂した姿を見せている。

The Kawaji district is located near the center of Tokamachi-city and has a good mix of rows of houses and farmland. The district has been actively involved in the Echigo-Tsumari Art Triennial, and has a larger population of mature adults than the mountainous areas. This reservoir was originally a reservoir for agricultural use, but it is no longer used, and lotus trees and other plants are still thriving.

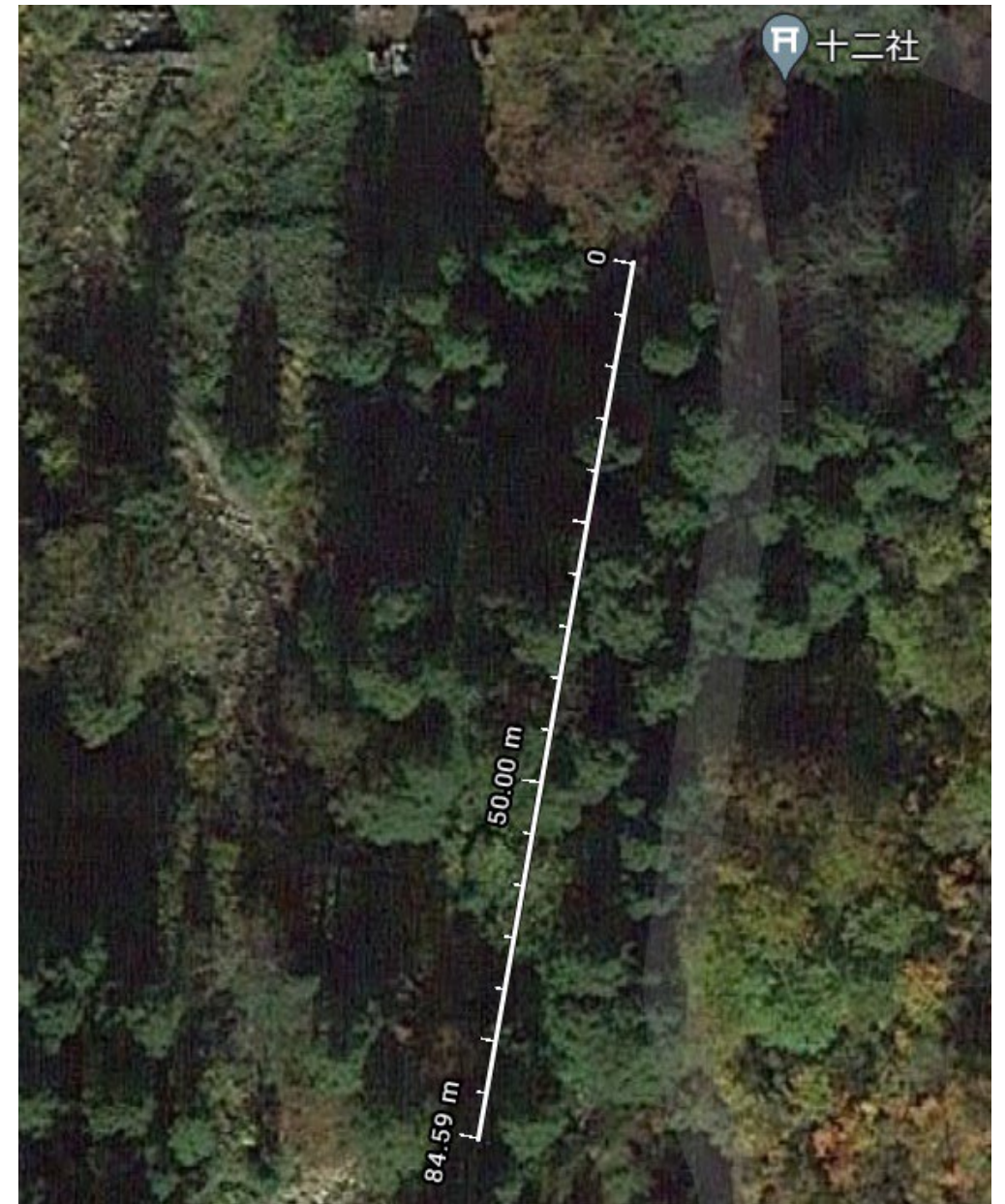
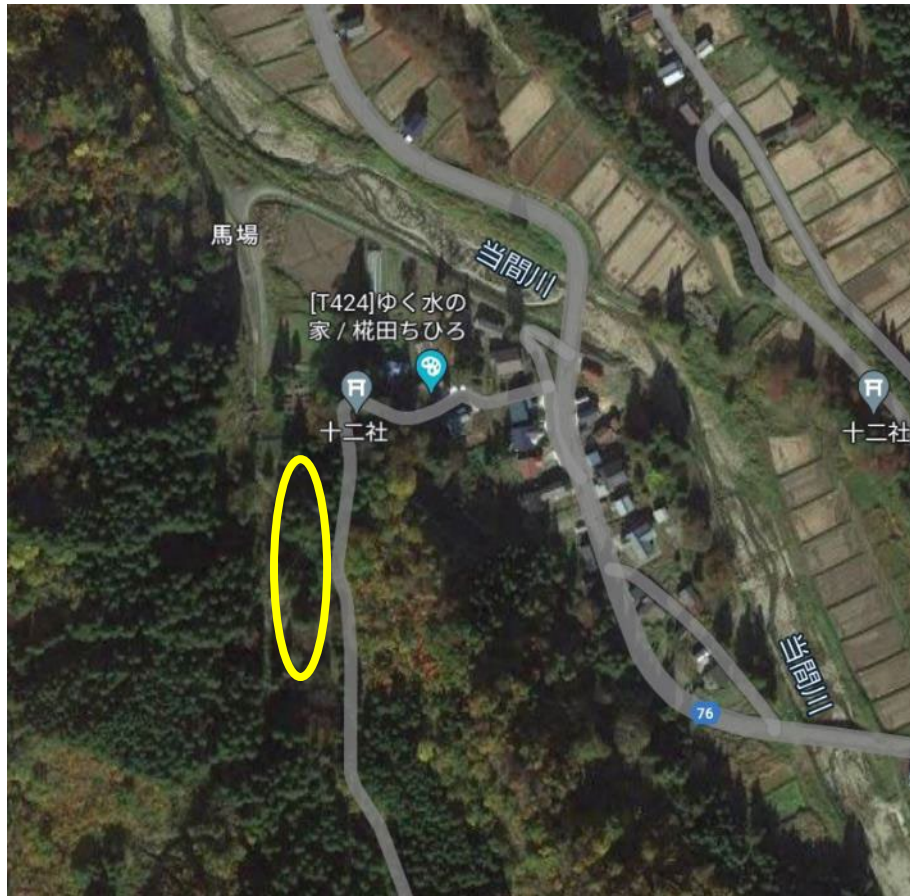


過去作品：深澤孝史「待ヶ池」 (2018) Past work: Fukasawa Takafumi "Tsukimachigaike" (2018)

No.4

市ノ沢集落の林

Forest in Ichinosawa village



市ノ沢は十日町エリア南部にある集落で、当間川に沿って家々が点在している。地域の人々に守られてきた十二社から延びる林道に沿って、うっそうとした木々が奥深く広がる場所。集落はこれまでの芸術祭で2度、アーティストを受け入れており、たいへん懸命に取り組んでこられた。

Ichinosawa village is located in the southern part of the Tokamachi area, with houses scattered along the Atema River. The area is deep in dense trees along a forest road extending from the Twelve Shrines, which has been protected by the local people. The village has hosted artists twice in previous art festivals, and they have worked very hard.

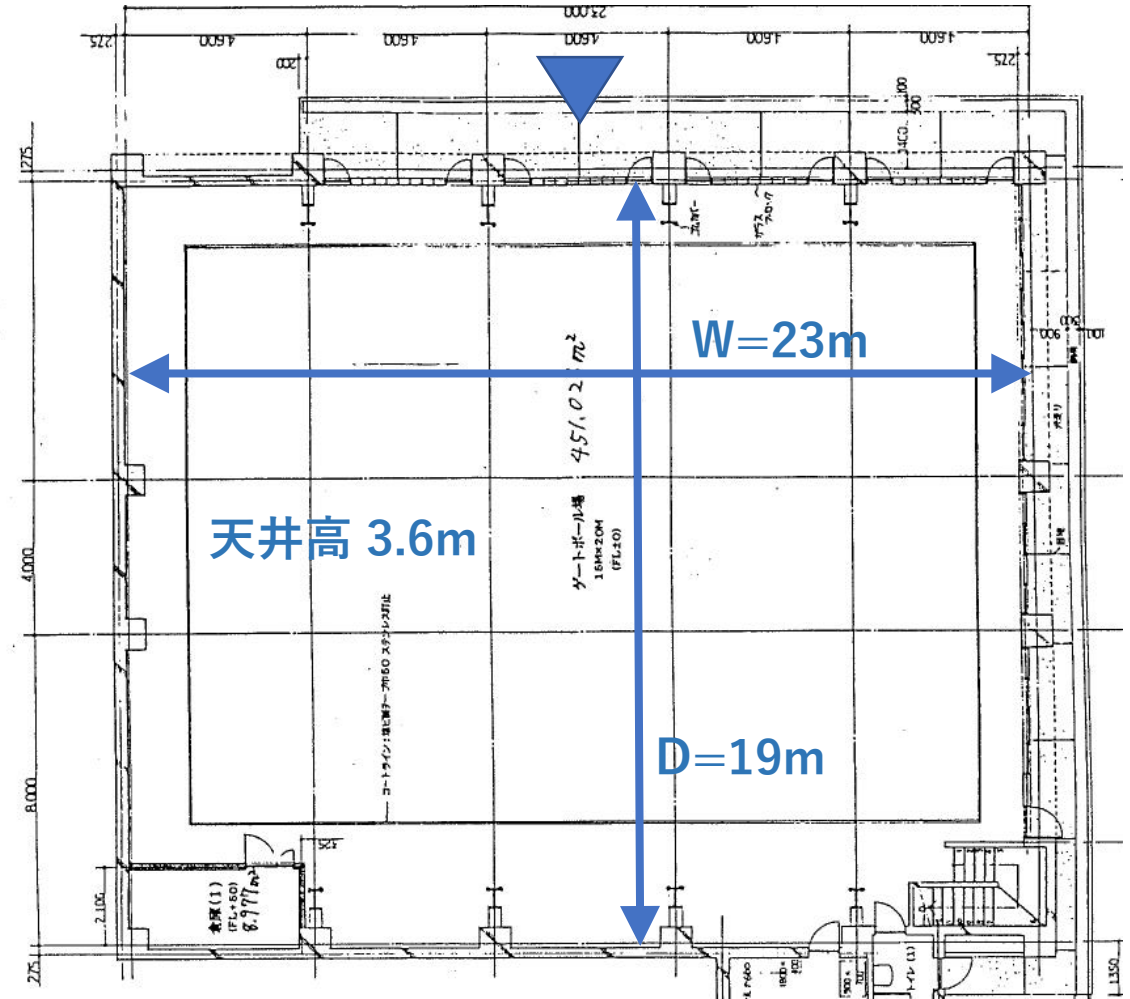


過去作品：シ・ハイ「森林梦境 森の夢」 Past work: Shi Hai "Forest Dream" (2015)

No.5

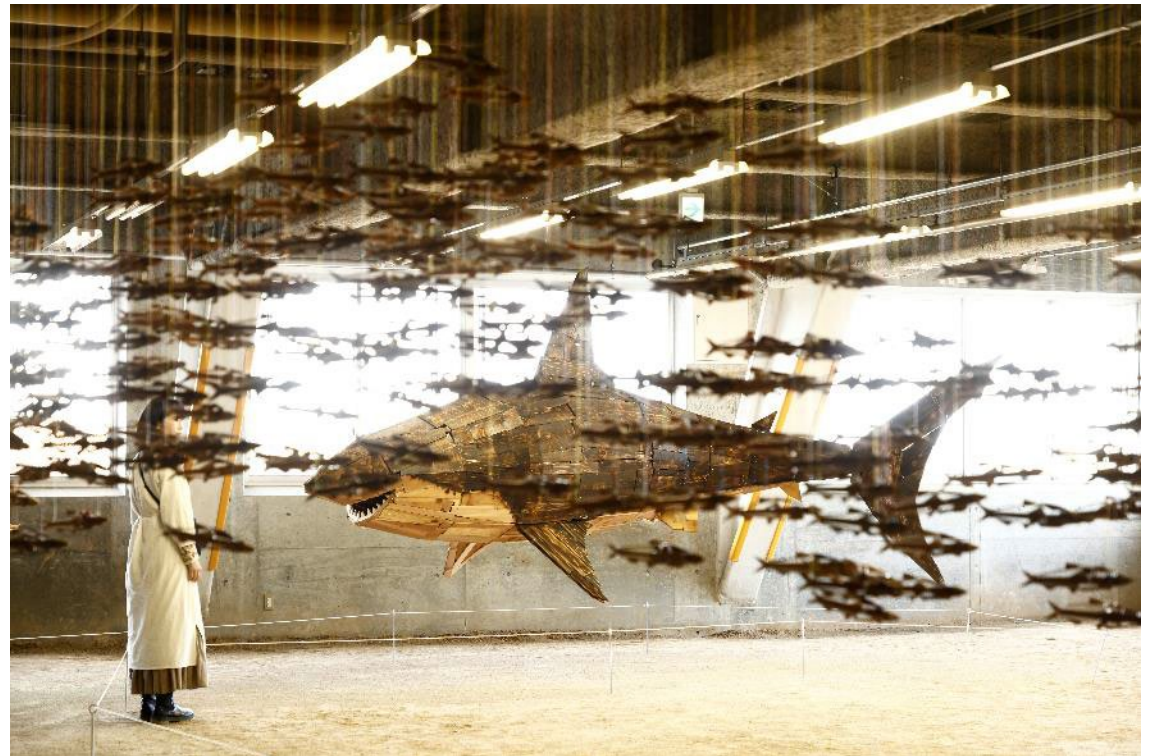
竜ヶ窪温泉竜神の館 地下の旧ゲートボール場

Former gate ball field in the basement at Ryukakubo Hot Spring “Ryujin no Yakata”



名水百選・龍ヶ窪のほど近くに立地する、温泉施設の地下にある旧ゲートボール場。津南エリアのダイナミックな河岸段丘の上段に広がる芦ヶ崎地域にあり、周辺には農地の見事な風景が広がる。地区住民や温泉施設は芸術祭作品の誘致に熱心で、アーティストとの交流を待ち望んでいる。

Located near Ryugakubo, one of the 100 best water features, this former gate ball field is located underground in a hot spring facility. Located in the Ashigasaki area, which stretches across the upper part of the dynamic river terrace in the Tsunan area, the area is surrounded by a splendid landscape of farmland. The district residents and the hot spring facility are eager to attract art festival works and look forward to interacting with the artists.



過去作品：加治聖哉「廃材水族館:竜ヶ窪」 Past work: Kaji Seiya "Ryugakubo waste aquarium" (2022)

No.6

小荒戸地区 駐車場
Koarato District Parking Lot



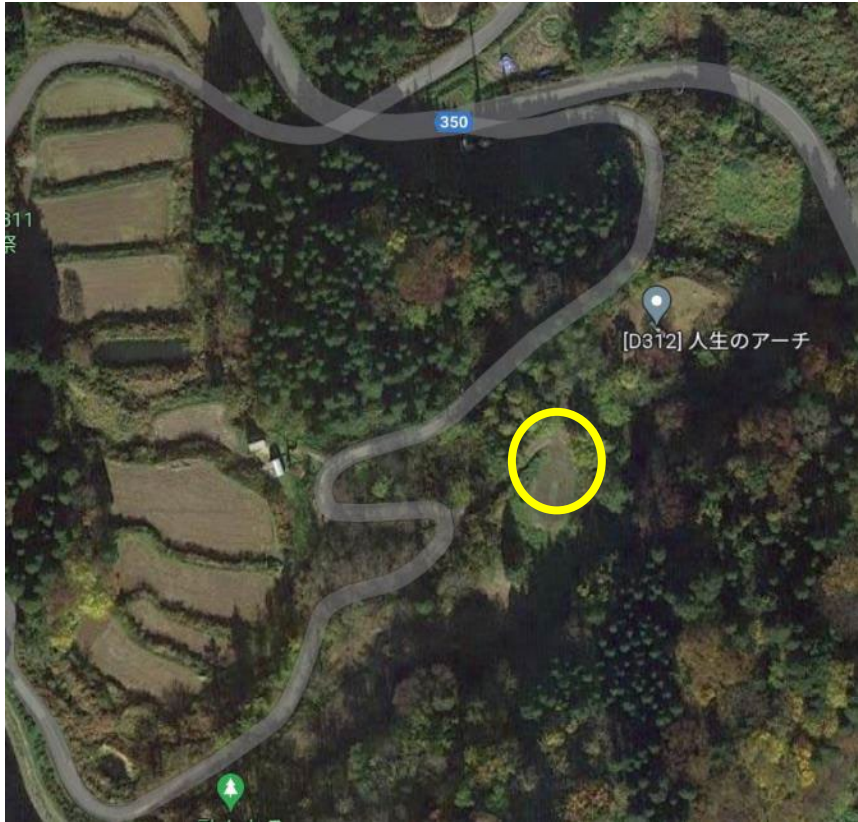
まつだい「農舞台」フィールドミュージアムからほど近い地区で、山と川に挟まれた小さな集落。集落と自然の距離が近く、雪国ならではの暮らしの知恵が色濃く残っていて、コミュニティのPR活動にも熱心である。集落の中心の駐車場を候補地としているが、集落内への様々な展開を受け入れる余地もある。

Not far from the Matsudai NOHBUTAI Field Museum, this district is a small village nestled between mountains and a river. The community is close to nature, and the wisdom of life unique to snow country remains strong, and the community is enthusiastic about public relations activities. A parking lot in the center of the village is a candidate site, but there is also room to accommodate various developments within the village.



No.7

松代城山内 (まつだい「農舞台」フィールドミュージアム)
In Matsudai Joyama (Matsudai NOHBUTAI Field Museum)



越後妻有でもっとも多くの作品が点在する松代城山。イリヤ&エミリア・カバコフの「人生のアーチ」からほど近い場所。もとは田んぼだったが、古い記録では屋外アーチェリー場として利用されていたこともある。夏には木々や下草に覆われ、濃い緑に囲まれて隔絶した特別な場所となる。

Matsudai Joyama is dotted with the largest number of artworks in Echigo-Tsumari. Not far from Ilya & Emilia Kabakov's "Arch of Life". Originally a rice field, old records indicate that it was once used as an outdoor archery range. In summer, it is covered with trees and undergrowth and becomes an isolated and special place surrounded by thick greenery.

