



# Usage Details FY2024

## FY2024

During the Echigo-Tsumari Art Triennale (July 13-November 10), closed on Tuesdays and Wednesdays. Outside of the above period, we accept groups of 10 or more people.

# Sansho House Facility Information

The nostalgic wooden schoolhouse was built in 1955, and after more than 70 years, it still withstands heavy snowfall and is carefully protected by people. Sansho House serves as a base facility for the Echigo-Tsumari Art Triennale and is open to many visitors, including individuals, families, and the Kohebi-tai, a group of supporters of the Art Triennale. Visitors can also view the works of world-renowned artist Leandro Erlich. With the addition of local residents, Sansho House looks forward to welcoming you. In winter, we also offer organized tours to coincide with local small New Year's events.

- The building is a 50-year-old wooden structure. We ask for your understanding in operating a facility built in a village.
- **There is no air conditioning in the guest rooms.** There are fans in summer and heaters in winter, but please be aware that it can get very hot, especially in summer.

## Sansho House Facility Information

**Lodging and Exchange Building:** 2-story wooden structure, 955 sq.m.

**Rooms:** 6 total (4 rooms for 16 persons, 2 rooms for 8 persons)

**Capacity:** 80 people  
**Gymnasium:** Steel construction, 652 square meters

**Bathrooms:** Separate for men and women, showers only

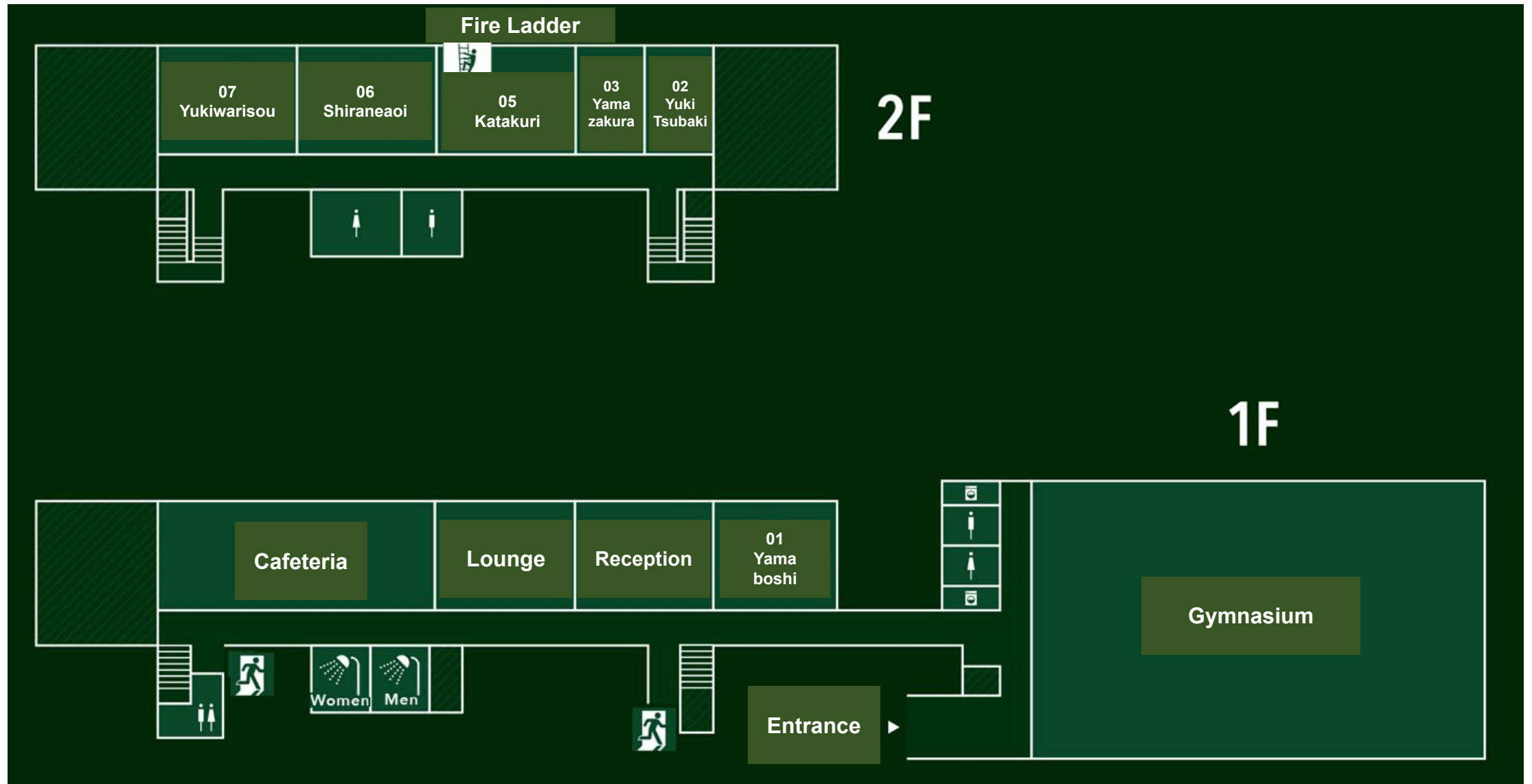
**Toilet:** Separate for men and women, 1F (2 places), 2F (1 place)

**Washing machines and dryers:** 2 each (free of charge)

**Other:** Valuables lockers (free of charge)

**Parking:** Free 30 spaces in total

# Sansho House Facility Information



# Facility Information

## Guest room

Sansho House can accommodate 80 people in six rooms, four for 16 people and two for 8 people, in rooms that were once classrooms.

Rooms are furnished with bunk beds, and men and women sleep in separate rooms.

**Please note that there are no private rooms.**

- Beds in the rooms are separated by curtains. Please note that you may be placed in the same room with another group. Please help yourself to set up your bed sheets.



## Cafeteria

The cafeteria is a spacious area where guests can gather together by removing the partition between the two classrooms. In addition to meals, the dining room can be used for workshops, meetings, and other purposes. It is also a great place to spend time according to the season. Enjoy the refreshing outdoor terrace during the summer season.

- Please use the cafeteria space for food and drink.

□ **You are not allowed to bring in alcoholic beverages.**

You can buy alcoholic beverages in a cafeteria. Only cash is accepted.

Price: canned beer 300 yen / one cup of sake 300 yen / canned chuhai 200 yen



## Gymnasium/Grounds

We have a gymnasium that can be used for seminars, exercise, and other multi-purpose activities. The gymnasium is equipped with a badminton set, balls, and other simple equipment, so you can play freely during your stay. In winter, the ground is covered with snow, so you can play in the snow to your heart's content.

## Shower room

We recommend using a nearby day-trip bathing facility (about 10 minutes by car) for bathing. In Sansho House, only showers are available.



# Echigo-Tsumari Art Triennale Artworks

## Leandro Erlich “Lost Winter”

Sansho House has a permanent collection of "Echigo-Tsumari Art Triennale" artworks, Leandro Erlich, "Lost Winter". From a door in one of the exhibition rooms, an early spring view of Matsunoyama. Japanese butterburs peek out from the snow, and in the evening you can hear the sound of frogs. While snow still remains, this work imagines a landscape that rejoices in the small signs of spring after a long, long winter.

In addition, past works and new works will be shown during the Echigo-Tsumari Art Triennale.



# Facility Hours and Notes

## Facility Hours

Check-in: 16:00~/ Check-out: ~10:00

Dinner time: 19:00~21:00 / Breakfast time: 7:00~9:00

Curfew: 22:00/ Lights out 23:00

Cafeteria use time:~22:30/ Alcohol sales:~22:00

Gymnasium, gallery, store, laundry use time:  
~21:00/6:30~9:30

Shower hours: ~22:00/6:30~9:00

- We recommend using a nearby day-trip bathing facility for bathing.

## Requests for use

- For payment of the fee, we ask that you make payment in advance at the reservation site.
- Everything in Sansho House is self-service. Please help yourself to change bed sheets, serve and remove meals, etc.
- Please understand that during the Echigo-Tsumari Art Triennale, the contents of the website may differ slightly due to the use of the website by festival personnel and supporters.
- Please take care of your valuables on your own (lockers for valuables are available on the 1st floor).
- Smoking is not permitted in the entire building. Please smoke in the smoking area.



# Usage Fees

## Accommodation Fee

Prices include tax. Check-in time is from 4:00 p.m. on the day of your stay and check-out time is by 10:00 a.m. the next day.

Children under elementary school age may share a bed with a parent or guardian (sleeping with a parent).

No overnight stay fee will be charged for those who sleep with their parents.

However, an additional 500 yen will be charged on the day before weekends and holidays.

## Cancellation Policy

The percentage is the ratio of the penalty charge to the basic rate.

If the contracted number of days is shortened, the penalty fee for the first day will be collected regardless of the number of days shortened.

	Adults (Junior high school students and above)	elementary school student	Less than elementary school age
1 night, 2 meals ※Plus 500yen in the day before Saturdays, Sundays and holidays	6,750yen	4,750yen	4,000yen ※In case of bed use and 2 meals
Staying overnight without meals	4,000yen	3,000yen	Bed use→3000yen Sleeping together→free
Dinner	1,870yen	1,000yen	600yen
Breakfast	880yen	750yen	400yen

Not staying	On the day	One day before	3 to 5 days before
100%	100%	50%	30%

# Access/Inquiries

**Location:** 327 Kotani, Matsunoyama, Tokamachi-shi, Niigata 942-1402

**Inquiry:** [info@sanshohouse.jp](mailto:info@sanshohouse.jp)

**TEL:**025-596-3854 (In case of absence, the call will be forwarded to the following number)

**TEL:**025-761-7767 (Echigo-Tsumari Art Field General Information Center)

## By train

About 2.5 hours from Tokyo and Niigata. Take the Shinkansen / Hokuhoku line to Echigo-Yuzawa to Matsudai. To reach Sansho House, please take a local bus or cab. However, please note that there are not many buses. The closest bus stop to Sansho House is Kotani.

The bus stop is not listed in the timetable. For details, please contact Tokubu Bus (TEL: 025-599-2312). For your reference, the bus stop is next to the "Sakaimatsu" bus stop. The "Kotani" bus stop is located between "Matsudai Branch Office" and "Sakaimatsu".

Large buses are not allowed in the village. (Medium-sized buses can enter and exit the back of the facility from April to November except during the snowfall season. Please contact the above office if you are coming by large buses.

## **Sansho House Facilities Information**

<https://www.echigo-tsumari.jp/travelinformation/sanshohouse/>

## **Sansho House Reservation URL**

<https://echigo-tsumari.urkt.in/ja/direct/offices/3009/courses>

## By Car

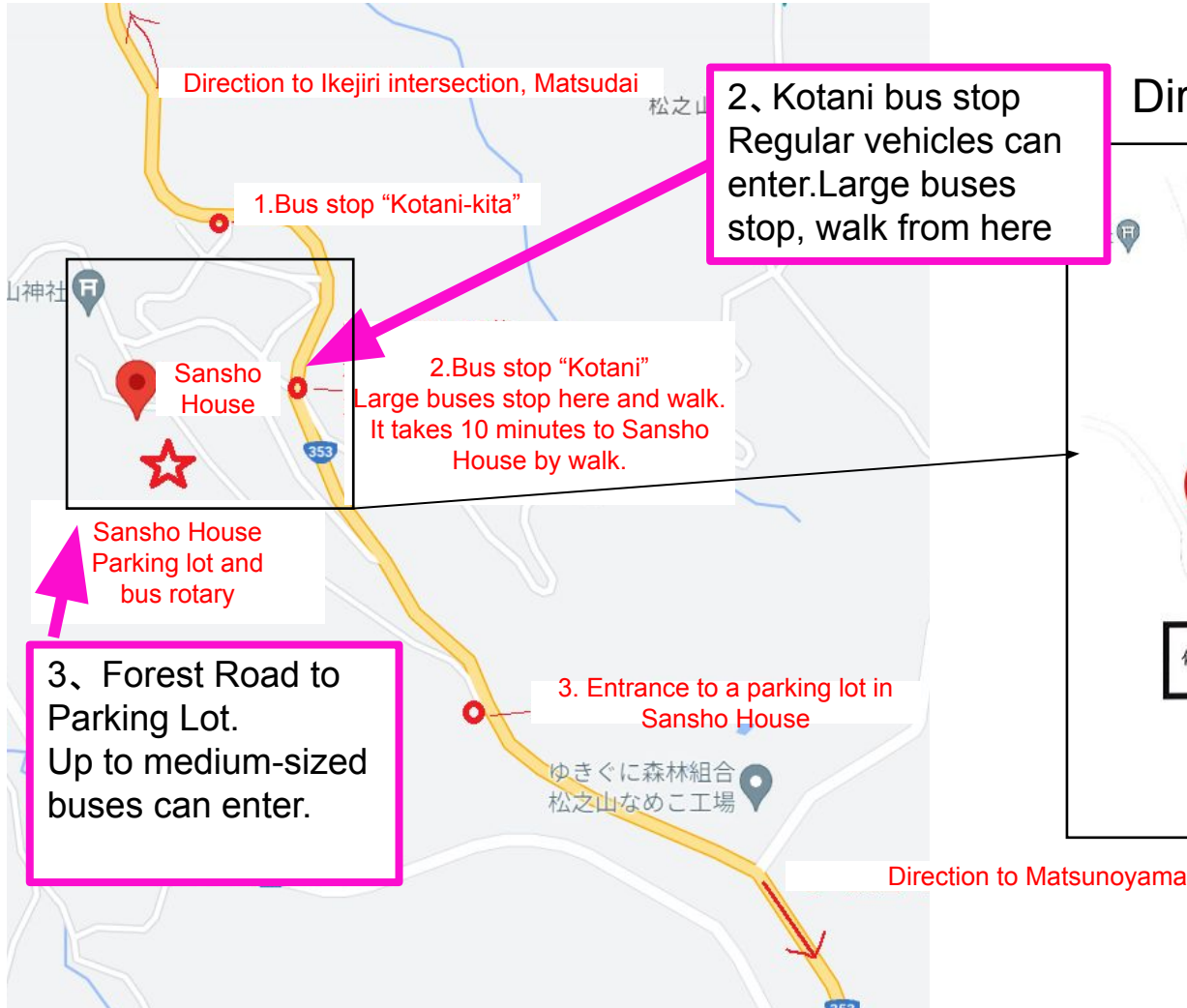
Tokyo (about 3 hours)- Kanetsu Expressway Shiozawa Ishiuchi IC - Route 353- Kan-etsu Expressway Muikamachi IC - Route 253Nagoya (about 4 hours) - Chuo Expressway - Nagano Expressway - Joshinetsu Expressway Toyota Iiyama IC - Route 117Kanazawa (about 3 hours and 30 minutes) - Hokuriku Expressway Joetsu IC - Route 253Niigata (about 2 hours) - Kan-etsu Expressway Echigo-Kawaguchi IC - Route 117Kansai area (about 6 hours) - Meishin Expressway - Hokuriku Expressway Joetsu IC - Route 253

■ Cab (Tobu Taxi) TEL / 025-597-2254

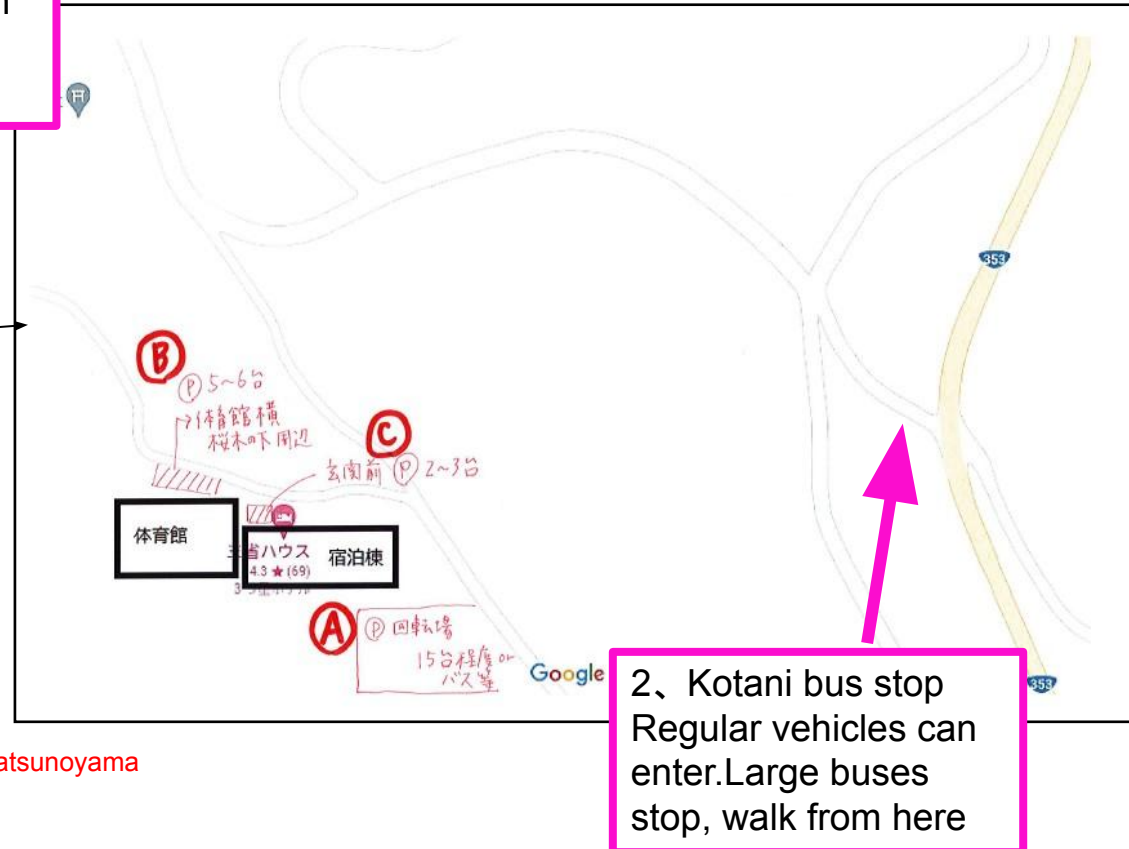


# Parking lot in the village

Around the village



Direction to Sansho House



# Parking lot in the village

## By regular car

You can enter the village by private car from 2 and 3. You may use B and C for unloading, but please use A for parking.

## Up to medium-sized buses

The village can be accessed from 3. Please let us know if you are entering the village because there may be parking in some cases.

## Large buses

You are not allowed to enter the village. 2. Please stop at the Kotani bus stop (private house) and go up on foot. Please let us know when you arrive so that we can contact people who live around the facility.

